



RULES RELATING TO THE QUALIFICATION, REGISTRATION AND CONTROL OF MATCH OFFICIALS (REFEREES, FOURTH OFFICIALS AND ASSISTANT REFEREES)

For the purpose of these Regulations, all references to a Match Official shall mean a referee, a fourth official and assistant referee.

1. No person shall officiate as a Match Official in any competition under the jurisdiction of the Football Association of Wales ("the FAW") unless they are registered with the Association or an Area Association.
2. A Match Official must be registered with the Association on payment of a subscription fee of £30.00, which will be reduced to £20.00 if renewal payment is made on or before the 30th June for the forthcoming season.
3. Any person who wishes to be registered shall register on the Association's Comet system and pay an annual subscription fee. The Association shall keep a register on the Comet system of all registered Match Officials.
4. A Match Official ranked at either Grade 4 or Grade 3 will be allocated to an Area Association within the area they reside, and that Area Association shall then be their parent Association and shall deal with all matters concerning them as a Match Official. The Match Official's parent Association shall also deal with promotions up to and including Grade 3. Any such promotion to Grade 4A or 3 may be considered by the parent Association as soon as the Referee has refereed a minimum of ten (10) matches and attained sufficient marks through a minimum of four (4) observations. For the avoidance of doubt, no Area Association may apply a more lenient or stringent criteria than that set out in this clause.
5. The qualification of all applicants shall be subject to such examinations as the Referees Committee of the FAW or the Area Association shall determine from time to time. All applicants must have completed a full qualification (or other relevant FIFA member Association qualification). Referees at Grade 3 and above and any referee or assistant referee seeking promotion must revalidate this qualification by attending the relevant Association educational course at least every three years.
6. Grading shall be in four levels. The grading of a referee and assistant referee by the Association or Area Association must be accepted by all other Associations affiliated to the FAW.
7. All registration fees are payable annually. The Association shall, on or before 1st July in each year, classify their Grade 2 referees and assistant referees and above and validate this information on the Comet system on or before the 1st day of August. Each Area Association shall, on or before 1st July in each year, classify their Grade 3 referees and below and validate this information on the Comet system on or before the 1st day of August.
8. In the Welsh Cup Competition, only Grade 3 referees and above shall be appointed, however, lower-level officials may act as an assistant referee but the senior assistant referee in all Welsh Cup matches shall be either a specialist assistant referee or at least Grade 3 when available. In

the FAW Trophy, Women's Cup and Youth Cup Competitions, after round four, only Grade 3 referees and above shall be appointed, however, lower-level officials may act as assistant referee.

9. Match Officials must not travel in company with teams.
10. An applicant between the ages of 14 and 15 years (inclusive) must be registered as a junior referee by the Area Association following completion of the Association's FAW Referee Award.
11. An applicant over the age of 14 may be registered to referee junior football by completing the FAW Intro to Refereeing Award.
12. Match Officials under the age of 18 must wear a yellow arm band to indicate that they are under the age of 18. The yellow arm band must be supplied by the Match Official's Area Association.
13. Match Officials must only accept appointments from the competition administrator.
14. Match Officials must wear a referee kit in all Official Matches and Open Friendly Matches.
 - 14.1 In all leagues, league cup and FAW cup competition matches in which only Clubs in Tiers 2 and below of the men's and women's Pyramid League System (including those tiers under the control and management of the Area Associations) participate, Match Officials are required to wear a black shirt, black shorts and black socks. In exceptional circumstances where it is considered vital to aid visibility during a game, Match Officials may wear a shirt and/or socks that are not black, provided that all Match Officials officiating in the game wear the same-coloured shirt and socks. Match officials must always wear black shorts.
15. Match Officials must wear the official badge of the Association. Match Officials may also wear the official badge of the Area Association and/ or any league in which they officiate.
16. No Match Official shall be allowed to officiate in any Official Match or Open Friendly Match if not registered with the Association.
17. Match Officials registered with the Association are not permitted to act either as a Match Official in any league or competition in which they also take part as a Player.
18. If for unforeseen circumstances, a registered Match Official is unable to officiate, competitions or Clubs may agree on some other person to officiate in these extreme circumstances.
19. No Match Official shall act as an Intermediary for a Club in the transfer and/or engagement of a Player.
20. All Sponsorship on a Match Official's kit shall be in accordance with the FAW's Kit Regulations and must be approved by the FAW's Referees Committee.
21. Nominations to the FAW CORE Cymru program must firstly be drawn from the list of Match Officials who have progressed through the Area Association Talent & Mentor group scheme, unless in special circumstances otherwise agreed by the FAW Referees' Committee.
22. The referee is to decide what is required from a club appointed assistant referee in terms of ball out and offside. The referee should decide on which side the club assistant referee should stand but it is recommended that he/she takes their own forward line.

23. For all disciplinary procedures, Match Officials should refer to the FAW's and Area Association disciplinary regulations.
24. Match Officials who submit a report of misconduct after any deadline set shall be dealt with in accordance with the procedures as laid down by the FAW or relevant Area Association from time to time.
25. All Match Officials must use the Comet system as required by the FAW to submit availability, accept or decline appointments and to submit match reports in accordance with competition regulations.
26. The hierarchy of authority for all Match Officials on a Sunday is as follows; FAW appointments, Cymru Premier, Adran Premier, other.
27. (i) The fee for any referee course shall be set by the FAW Referees Committee on an annual basis.

(ii) Any Match Official who has been inactive for five years must retake the FAW Referee Award.
28. Attendance at Area Association training and education seminars is mandatory for all Match Officials seeking promotion, unless a legitimate reason for non-attendance is provided and accepted by the Area Association. Fitness tests must also be completed where appropriate.

As approved by the FAW's Referees Committee – May 2024



REFEREE CATEGORIES

International (FIFA List)

Cymru Premier and Below
All National Cup Competitions

Elite Group One

Cymru Premier and Below
All National Cup Competitions

Elite Group Two

Cymru Premier and Below
All National Cup Competitions

Category 2

Cymru North & South and Below
4th Official Cymru Premier
All National Cup Competitions

Category 3a

Ardal Leagues Referee
All National Cup Competitions Referee
Permitted to act as AR at Tier 2 & Below

Category 3b

Area Association (Tier 4 & Below) Referee
All National Cup Competitions Referee
Permitted to act as AR at Tier 2 & Below

Category 4A

Minimum 3rd
Season Referees
(& longer).
Referee at Area
Association Level.
Permitted to
referee in National
Leagues Reserve
matches.
Permitted to act
as Assistant
Referees at Tier 2
and below subject
to attending an
Assistant Referees
Course.

Category 4B

Minimum 2nd
Season Referees (&
longer) aged 16 or
older. Referee at
Area Association
Level. Permitted to
referee in National
Leagues Reserve
matches. Permitted
to act as Assistant
Referees at Tier 2
and below subject
to attending an
Assistant Referees
Course.

Category 4C

Minimum 1st
Season Referees (&
longer) aged 16 or
older. Referee at
Area Association
Level. Permitted to
referee in National
Leagues Reserve
matches. Permitted
to act as Assistant
Referees at Tier 3
and below subject
to attending an
Assistant Referees
Course.

Category 4D

Qualified &
Registered
Referees aged
14-15.

Category 4E

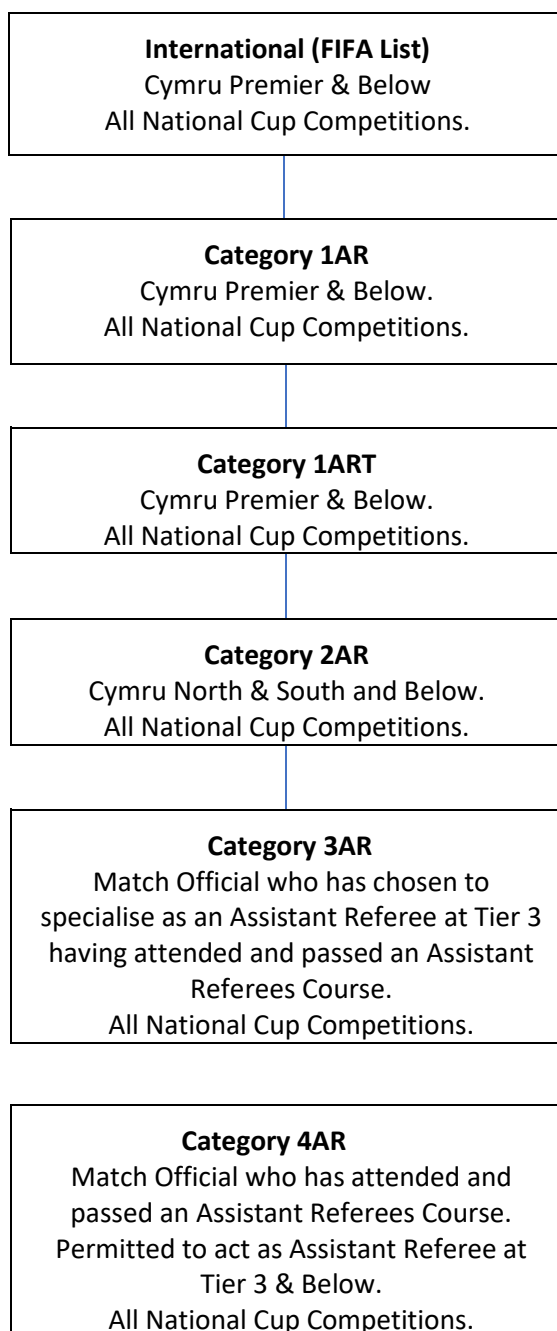
Qualified &
Registered
Referees who
are not actively
officiating.

Club Referee

Qualified & Registered
Referee officiating
matches for one Club
on the occasions a
neutral Referee is
unavailable.

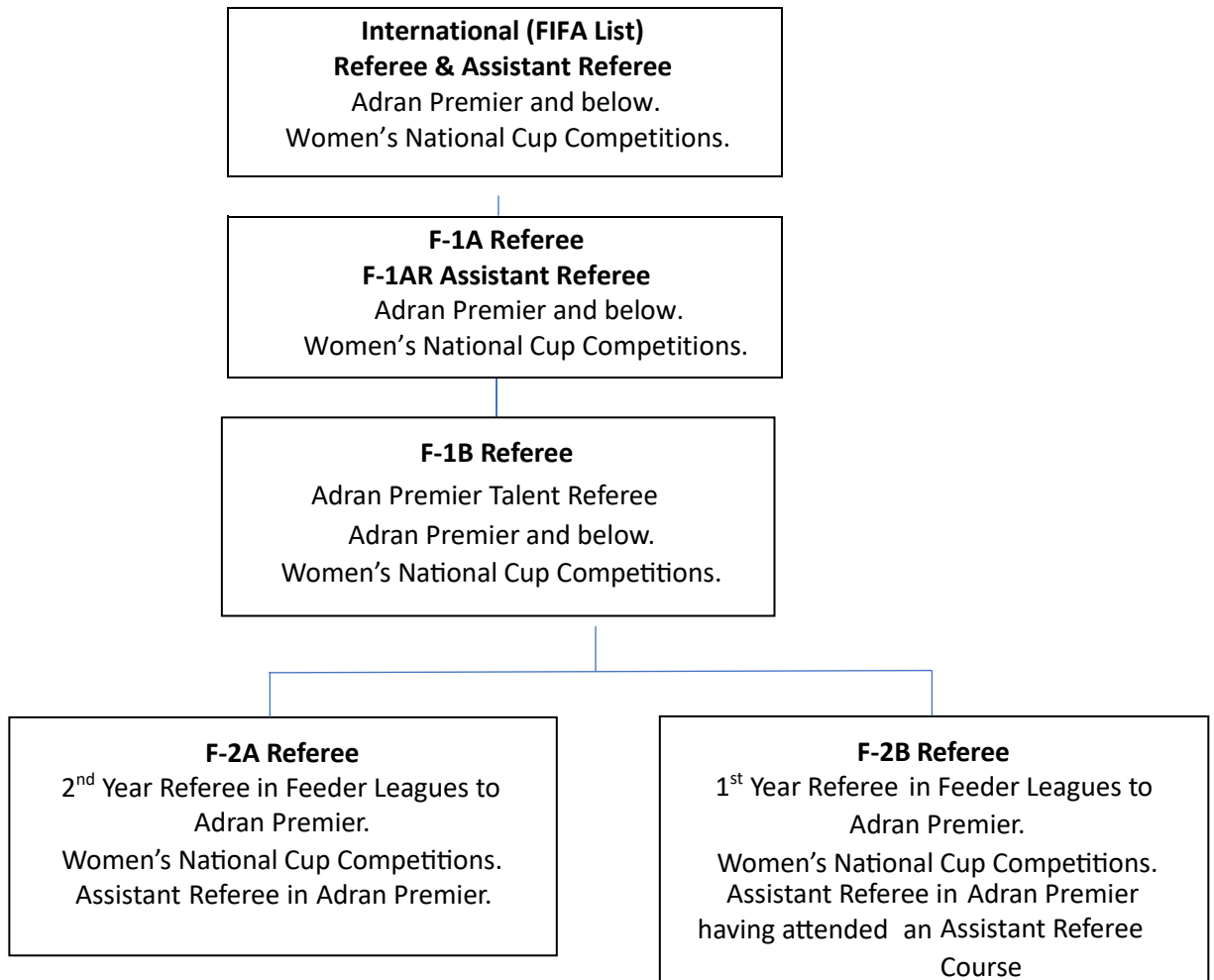


ASSISTANT REFEREE CATEGORIES





WOMAN REFEREE & WOMAN ASSISTANT REFEREE CATEGORIES



Should women match officials wish to progress in women's football as well as men's football, they will require 2 categories (1 men's category and 1 women's category).



JUNIOR REFEREE CATEGORIES

AJR

Adult Referee officiating junior football with FAW Intro To Refereeing Award Qualification only.

CJR

Child junior Referee officiating junior football with FAW Intro To Refereeing Award Qualification only.
(CJR Referees must only referee football matches of an age range below their academic year.)

FUTSAL REFEREE CATEGORY

Futsal Referee

Qualified Futsal Referee.

WALKING FOOTBALL REFEREE CATEGORY

Walking Football Referee

Walking Football Referee qualified via Walking Football Wales Referee Course.



**DISABILITY FOOTBALL REFEREE
CATEGORY**

Disability Football Referee

Disability Football Referee qualified via
Referee Course with FAW Disability
Football.

As approved by the Referees Committee – May 2024